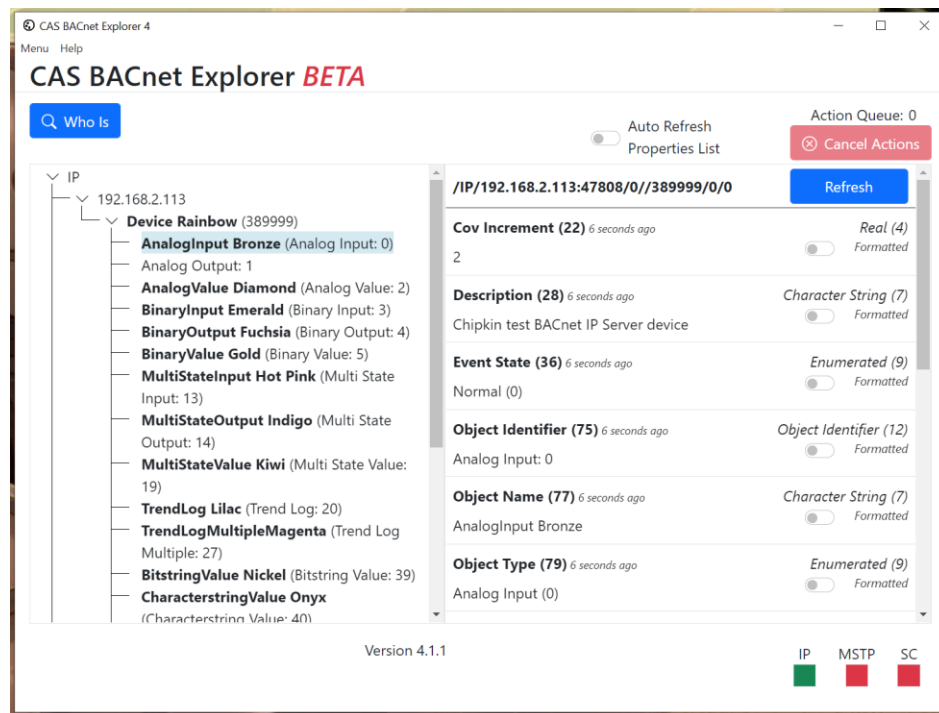


# CAS-1000-10 – CAS BACnet Explorer

DATASHEET – Rev 1

## DESCRIPTION

The CAS BACNET EXPLORER is an application that can be used to Discover, Explorer, Monitor, Debug, Test and Create reports for BACnet networks.



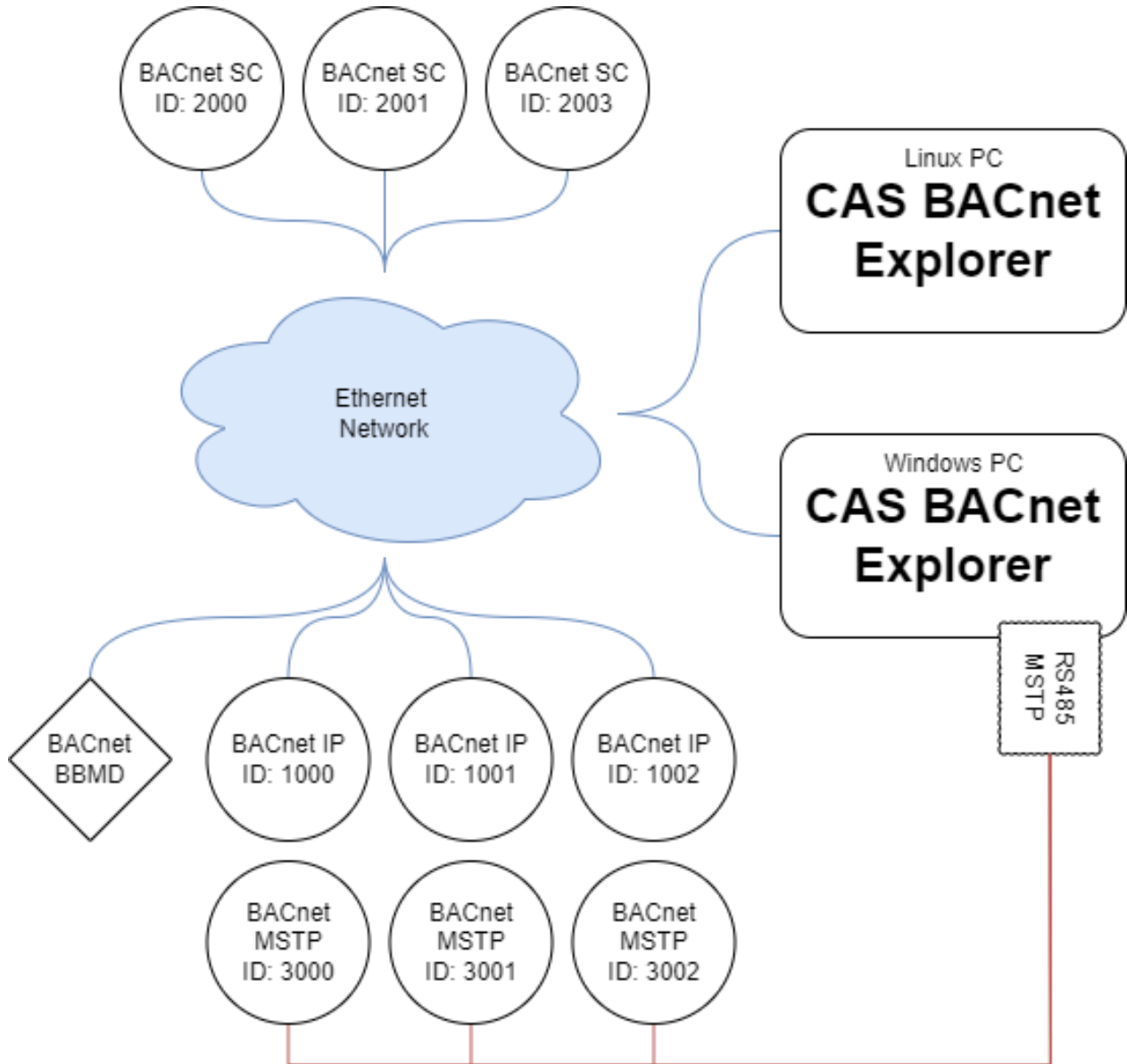
## FEATURES

The CAS BACnet Explorer supports the following features:

- Supported BACnet networks
  - BACnet®/IP
  - BACnet®/SC (Secure Connect)
  - BACnet®/MSTP (Master/Slave/Token Passing)
- Supports Windows 7 or later, and Ubuntu 18.04 or later
- Discovery of BACnet devices
- Custom rendering of BACnet properties
- Generation of reports for offline documentation
- Auto refresh and monitoring
- Supports BACnet commands
  - Who-Is
  - Who-Has
  - Time-Synchronization
  - Device Communication Control
  - Read-Property
  - Read-Property-Multiple
  - Write-Property
  - Write-Property-Multiple
  - Subscribe-COV
  - Cancel-Subscribe-COV
  - Create-Object
  - Delete-Object
  - Read-Range
  - Confirmed-Text-Message
  - Unconfirmed-Text-Message
  - Register-Foreign-Device
- Supports BACnet protocol revision 20+

## CONNECTION Diagram

This block diagram shows how the CAS BACnet Explorer connects to different BACnet networks. BACnet IP, BACnet MSTP, BACnet Secure Connect (SC)



## SALES AND CUSTOMER SERVICE

Chipkin is proud to provide support for our products. For technical support, sales and customer service, please contact us.

Toll Free: +1 866 383 1657

Email: [salesgroup1@chipkin.com](mailto:salesgroup1@chipkin.com)

All contents are Copyright © 2000-2022 Chipkin Automation Systems Inc. All rights reserved.  
This document is Chipkin Public Information

## REVISION HISTORY

DATE	RESP.	DRIVER VERSION	DOCUMENT REVISION	COMMENTS
16 June 2022	SWS	1.00a	1	Created